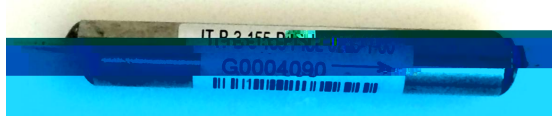


+Tap



- 
- 
- 
- 
- 
- 
- 
- 

- Telcordia GR-1221-CORE
- RoHS

			nm	1528~1569
	Tap	2%	dB	16.5~18.0
		3%	dB	14.6~16.2
		5%	dB	12.2~14.0
		10%	dB	9.6~10.6
		98%	dB	0.25
		97%	dB	0.30
		95%	dB	0.35
		90%	dB	0.60
			dB	21(PISL,PIS), 36(PID)
			dB	45

	dB	0.4(PISL), 0.5(PID)
	dB	0.15
	ps	0.05(PISL,PID); 0.10(PIS)
	dB	50
	mw	300
		-5~+70
		-40~+85
	mm	5.2*32( ); 3.5*29(mini);

IT- □-□-□-□-□-□-□-□

- Connectors:FC/UPC,SC/UPC,LC/UPC,00:No Connectorm
- Fiber Length 1 1.0m; customer specify
- Fiber Dia. 09 0.9mm 025: 0.25mm; customer specify
- Type: PIS:Single;PISL:Single,low PMD;PID:Dual
- Wavelength 155:C band.
- Split Ratio 1:1% 2 2%
- Pump Location A:Pump before ISO;B:Pump after ISO